

2014 Foundation Board of Trustees

Cindy Bedene
Marty Beezley
Sara Beezley-Keller
Todd Coleman
Sharon Dean
Vicki Dennett
Frank Dunnick*
Gordon Elliott
Joe Hart
Jim Hoskins
Ron Marrone

Kevin Mitchelson
Lynette Olson
Wilda Pentola
Pam Phalen
David Shepherd
Douglas Stuckey
Montie Taylor
Chris Ward
Wendell Wilkinson
Talaat Yaghmour
**Deceased*

The Community Foundation's Goals

The Community Foundation of Southeast Kansas inspires the generosity to meet the needs of the community we serve.

- Maximize the **long-term impact** of charitable donations
- Provide donors with **significant financial advantages**, tax benefits, convenience, professional management, versatility, and recognition or anonymity.
- **Tailor grants** to donors' interests
- **Provide options** for meaningful charitable giving

Community Foundation Affiliates Girard Area Community Foundation 2014 Board of Trustees

Blaise Bauer	Jim Vinze
Dale Coomes	Vicki Vinze
Ruth Duling	Marilyn VonSoosten
Janet O'Brien	Penne Warner
Wilda Pentola	Craig Wilbert
Michelle Smith-Puckett	Jay Yost
Tony Stonerock	

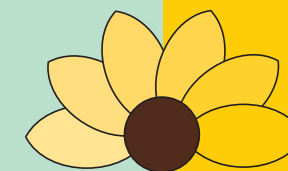
Fort Scott Area Community Foundation 2014 Board of Trustees

Pat Alexander	Bob Larkin
Jim Banwart, Sr.	Patty LaRoche
Tim Bloomfield	Lindsay Madison
Janet Braun	Dean Mann
Michael Bryant	Bob Marshall
Steve Buerge	Dave Martin
Larry Davenport	Randy Nichols
Carla Farmer	Beth Nuss
Charles Gentry	David Shepherd
Richard Goldston	Otie Thomas
Dick Hedges	Melissa Wise
Blake Hudson	Stephanie Witt
Janet Ida	

Marlene Braker, Office Administrator
Cathy White*, Executive Director

www.southeastkansas.org

2014 Annual Report



communityfoundation
of SOUTHEAST KANSAS

Community Foundation
of Southeast Kansas
100 South Broadway, Suite 100
Pittsburg, Kansas 66762
620-231-8897 www.southeastkansas.org



The year in review.....

This past year marked a **milestone** for the Community Foundation of Southeast Kansas as we surpassed **\$14.8 million in total assets**. This is not only significant because of the dollar amount but because of what it represents to our region—the **continued success of connecting people** and their charitable dollars to community and civic projects and organizations for which they care.

Access for donors is made possible through our **neighboring communities** and their foundations in Fort Scott and Girard. Each affiliate foundation is governed by a **dedicated board of trustees** who know how to attract and distribute charitable funds in efforts that enhance the **quality of life** of residents in their respective communities. Together, we continue to build goodwill and expand our reputation as a reliable, trustworthy partner with the ability to manage resources, award and distribute funds to **benefit others**.

We look forward to our continued work with donors who support issues, organizations, and programs that are important today, and we steadfastly ensure that **donors' support** will leave a long term impact for generations to come. We hope as you read this annual report you will consider supporting our efforts to **build stronger communities** in the area.

We regret the death of our Executive Director, Cathy White, early in 2015. She was a strong advocate for philanthropy in our region. May her love for helping others live on.

Wendell Wilkinson
2014 President Board of Trustees

Community Foundation of Southeast Kansas Statement of Financial Position December 31, 2014

Assets	
Cash and cash equivalents	\$ 1,272,698
Investments	
Fixed income portfolio	4,666,059
Equity portfolio	7,678,740
Alternative portfolio	221,289
Other brokers	605,670
Accounts receivable	500
Pledges receivable, net	419,150
Property and equipment, net of accumulated depreciation	<u>3,807</u>
Total assets	<u>\$ 14,867,913</u>
Liabilities and Net Assets	
Liabilities	
Accounts payable	\$ <u>1,053</u>
Total liabilities	<u>\$ 1,053</u>
Net Assets	
Unrestricted	13,203,783
Temporarily restricted	<u>1,663,077</u>
Total net assets	<u>\$ 14,866,860</u>
Total liabilities and net assets	<u>\$ 14,867,913</u>

Community Foundation of Southeast Kansas Statement of Activities Year Ended December 31, 2014

Revenues, Gains and Other Support	
Contributions	\$ 3,627,591
Fees	120,641
Investment return	743,023
Other	<u>7,973</u>
Total revenues, gains and other support	<u>\$ 4,499,228</u>
Expenses	
Program services and grants	\$ 1,237,529
Administrative expenses	357,853
Development expenses	<u>529</u>
Total expenses	<u>\$ 1,595,911</u>
Change in Net Assets	<u>\$ 2,903,317</u>
Net Assets, Beginning of Year	<u>11,963,543</u>
Net Assets, End of Year	<u>\$ 14,866,860</u>

Grants awarded since inception \$8.6 million

