

2017 Foundation Board of Trustees

Marty Beezley
Todd Coleman
Sharon Dean
Vicki Dennett
Linda Grilz
Paul Grimes
Joe Hart
Connie Kays
Rob Lessen
Ron Marrone
Dave Martin
Kevin Mitchelson

Wilda Pentola
Pam Phalen
Diana Polston
Ron Rhodes
Mark Schifferdecker
Judy Spigarelli
Douglas Stuckey
Montie Taylor
Chris Ward
Wendell Wilkinson
Talaat Yaghmour

The Community Foundation's Goals

The Community Foundation of Southeast Kansas inspires the generosity to meet the needs of the community we serve.

- Maximize the **long-term impact** of charitable donations
- Provide donors with **significant financial advantages**, tax benefits, convenience, professional management, versatility, and recognition or anonymity
- **Tailor grants** to donors' interests
- **Provide options** for meaningful charitable giving

Community Foundation Affiliates Girard Area Community Foundation 2017 Board of Trustees

Blaise Bauer
Mike Bodensteiner
Dale Coomes
Lori Johnson
Jerod Norris
Janet O'Brien
Wilda Pentola
Jeannie Peterson
Michelle Smith-Puckett

Josh Smith
Tony Stonerock
Jim Vinze
Vicki Vinze
Marilyn VonSoosten
Danielle Walsh
Craig Wilbert

Fort Scott Area Community Foundation 2017 Board of Trustees

Barbara Albright
*Tim Bloomfield
Steve Buerge
Mike Emerson
Frank Halsey
Dick Hedges
Blake Hudson
Patty LaRoche
Lindsay Madison
Bob Marshall
Dave Martin

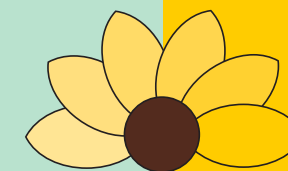
Greg Motley
Randy Nichols
Beth Nuss
Gary Palmer
Larry Seals
Otie Thomas
Melissa Wise
Stephanie Witt

*Deceased

Kit Parks, Executive Director
Sherri Stephens, Program Coordinator
Kim Lynch, Office Administrator

www.southeastkansas.org

2017 Annual Report



communityfoundation
of SOUTHEAST KANSAS

Community Foundation
of Southeast Kansas
100 South Broadway, Suite 100
P.O. Box 1448
Pittsburg, Kansas 66762

620-231-8897 www.southeastkansas.org



The year in review.....

Statement of Financial Position

Statement of Activities

Dear Friends,

What a wonderful year 2017 was for the Community Foundation of Southeast Kansas! The growth and successes of the Community Foundation have been just amazing to watch. The Foundation has grown from \$19 million in assets at the end of 2016 to over \$35 million in 2017!

The Community Foundation of Southeast Kansas and affiliate foundations in Girard and Fort Scott serve the region by helping individuals fulfill their charitable goals in ways that benefit the common good and improve quality of life. Since inception in 2001, the Foundation has awarded over \$11 million in grants through its funds. We are so grateful to our donors whose philanthropy creates positive impact and strengthens communities in Southeast Kansas.

During 2017 the Community Foundation received \$5 million in gifts of cash and stocks, and an additional \$9.8 million gift of farm land – our first major agricultural gift. We distributed over \$1.2 million in grants to charities benefitting health and human services, children and youth activities, educational purposes and civic engagement.

In November we held our second annual Match Day on National Giving Tuesday. We are pleased to report over \$83,000 was raised, which together with the \$27,000 CFSEK match benefitted seventeen non-profit organizations and schools that participated. The Board of Trustees thanks all who contributed so generously.

As the Community Foundation celebrates its 17th year, we look forward to working with our philanthropic partners to continue to make effective and lasting improvements for Southeast Kansas communities. We greatly appreciate our Trustees, Ambassadors, and our affiliates in Fort Scott and Girard, and the confidence and support of our donors and agencies that have partnered with CFSEK. You may be a fund holder, donor, grant recipient, financial advisor or live in a community that has benefited from a CFSEK grant whatever your relationship, we are here for you! Sincerely,

Kevin Mitchelson
President

Kit Parks
Executive Director

Assets	Dec. 31,2017	Dec. 31,2016
Cash and cash equivalents	\$ 1,303,391	\$ 945,947
Investments		
Fixed income	7,891,127	6,405,909
Equity	12,067,413	9,795,160
Real Estate	9,508,830	-
Other brokers & investments	5,423,172	2,385,940
Pledges receivable, net	41,351	179,863
Prepaid expenses	3,221	1,722
Property & equipment, net	<u>378</u>	<u>1,111</u>
Total Assets	<u><u>\$36,238,883</u></u>	<u><u>\$19,715,652</u></u>
Liabilities and Net Assets		
Liabilities		
Accounts payable	\$ 37,156	\$ 30,207
Funds held for agencies	<u>5,637,158</u>	<u>4,688,461</u>
Total Liabilities	<u>\$ 5,674,314</u>	<u>\$ 4,718,668</u>
Net Assets	<u>\$30,564,569</u>	<u>\$14,996,984</u>
Total Liabilities and Net Assets	<u><u>\$36,238,883</u></u>	<u><u>\$19,715,652</u></u>

Revenues, Gains and Support	2017	2016
Gifts and pledges	\$14,911,266	\$ 2,010,607
Income from services	217,797	162,846
Rental income	84,933	-
Investment return	2,130,490	973,169
Other	<u>28,133</u>	<u>6,852</u>
Total Revenues, Gains & Support	<u><u>\$17,372,619</u></u>	<u><u>\$ 3,153,474</u></u>
Expenses		
Grants and program services	\$ 1,162,841	\$ 823,127
Fees paid by agencies	171,024	119,395
Operating expenses	<u>471,169</u>	<u>377,756</u>
Total Expenses	<u>\$ 1,805,034</u>	<u>\$ 1,320,278</u>
Change in Net Assets	<u>\$15,567,585</u>	<u>\$ 1,833,196</u>
Net Assets, Beginning of Year	<u>\$14,996,984</u>	<u>\$13,163,788</u>
Net Assets, End of Year	<u><u>\$30,564,569</u></u>	<u><u>\$14,996,984</u></u>

GRANTS AWARDED SINCE INCEPTION - \$11 MILLION

Fund Category (\$000)	No. of Funds	Fund Bal at 12/17	Granted in CY17
Arts, Culture and Humanities	10	\$2,601	\$74
Education	20	\$12,952	\$85
Environment and Animals	4	\$1,774	\$60
Health	15	\$1,432	\$102
Public, Societal Benefit	65	\$10,105	\$460
Religion	4	\$1,430	\$50
Unrestricted	33	\$5,908	\$483
Total Net Assets + Agency Funds	151	\$36,202	\$1,314

Fund Type (\$000)	No. of Funds	Fund Bal at 12/17	Granted in CY17
Administrative	2	\$1,118	\$37
Donor-Advised	30	\$6,344	\$498
Designated	30	\$5,385	\$157
Field of Interest	35	\$5,089	\$362
Organization	36	\$5,637	\$152
Scholarship	12	\$308	\$15
Unrestricted	5	\$2,530	\$94
Supporting Organization	1	\$9,789	\$0
Total Net Assets + Agency Funds	151	\$36,202	\$1,314

