

2015 Foundation Board of Trustees

Cindy Bedene
Marty Beezley
Todd Coleman
Sharon Dean
Vicki Dennett
Gordon Elliott
Joe Hart
Jim Hoskins
Connie Kays
Ron Marrone
Kevin Mitchelson
Lynette Olson

Wilda Pentola
Pam Phalen
Diana Polston
Ron Rhodes
Judy Spigarelli
Douglas Stuckey
Montie Taylor
Chris Ward
Wendell Wilkinson
Talaat Yaghmour

The Community Foundation's Goals

The Community Foundation of Southeast Kansas inspires the generosity to meet the needs of the community we serve.

- Maximize the **long-term impact** of charitable donations
- Provide donors with **significant financial advantages**, tax benefits, convenience, professional management, versatility, and recognition or anonymity
- **Tailor grants** to donors' interests
- **Provide options** for meaningful charitable giving

Community Foundation Affiliates Girard Area Community Foundation 2015 Board of Trustees

Blaise Bauer
Dale Coomes
Ruth Duling
Janet O'Brien
Wilda Pentola
Michelle Smith-Puckett
Tony Stonerock

Jim Vinze
Vicki Vinze
Marilyn VonSoosten
Penne Warner
Craig Wilbert
Jay Yost

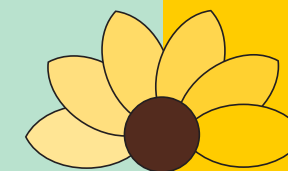
Fort Scott Area Community Foundation 2015 Board of Trustees

Barbara Albright
Pat Alexander
Jim Banwart, Sr.
Tim Bloomfield
Michael Bryant
Steve Buerge
Larry Davenport
Mike Emerson
Carla Farmer
Charles Gentry
Richard Goldston
Frank Halsey
Dick Hedges

Blake Hudson
Janet Ida
Bob Larkin
Patty LaRoche
Lindsay Madison
Bob Marshall
Dave Martin
Randy Nichols
Beth Nuss
David Shepherd
Otie Thomas
Melissa Wise
Stephanie Witt

Kit Parks, Executive Director
Sherri Stephens, Program Coordinator
Marlene Braker, Office Administrator
www.southeastkansas.org

2015 Annual Report



communityfoundation
of SOUTHEAST KANSAS

Community Foundation
of Southeast Kansas

100 South Broadway, Suite 100

P.O. Box 1448

Pittsburg, Kansas 66762

620-231-8897 www.southeastkansas.org



The year in review.....

We are privileged to live in southeast Kansas!

"Growing up rural" has both its merits and drawbacks, of course. But the older I get, the more fondly I am of simple pleasures uncomplicated by concrete and traffic, having experienced both.

Many of the clients served by the agencies we fund are not as fortunate, since southeast Kansas has always had its economic challenges. Your donations, no matter the size, are most welcome and much appreciated. The Community Foundation's granting focus is to benefit children and support basic human needs in southeast KS communities.

Your Community Foundation had another great year in 2015, albeit one in transition. Following the passing of Cathy White in March 2015, we hired our new Executive Director Kit Parks, who has done a great job in her new role. Another addition to the team, Sherri Stephens was hired in June as the new Program Coordinator. So we have a fresh energy and perspective at CFSEK, and it shows: We received over \$4.4 million in gifts last year and distributed \$1.3 million in grants to area charities. After expenses and market adjustments, our fund balances rose \$2.8 million to \$17.7 million, \$13 million of which is endowed.

Growth is good! Our two affiliates in Girard and Fort Scott experienced growth as well. Together, we are making a significant impact on the quality of life in southeast Kansas.

Douglas Stuckey, President
Community Foundation Board of Trustees

Community Foundation of Southeast Kansas Statement of Financial Position

Assets	Dec. 31, 2015	Dec. 31, 2014
Cash and cash equivalents	\$1,108,302	\$1,272,698
Investments		
Fixed income investments	5,503,356	4,666,059
Equity investments	8,479,388	7,678,740
Other brokers and investments	2,253,112	826,959
Pledges receivable, net	331,156	419,650
Property and equipment, net of accumulated depreciation	<u>2,459</u>	<u>3,807</u>
Total assets	<u>\$17,677,773</u>	<u>\$14,867,913</u>
Liabilities and Net Assets		
Liabilities		
Accounts payable	<u>\$1,744</u>	<u>\$1,053</u>
Total liabilities	<u>\$1,744</u>	<u>\$1,053</u>
Net Assets		
Unrestricted	16,095,954	13,203,782
Temporarily restricted	<u>1,580,075</u>	<u>1,663,078</u>
Total net assets	<u>\$17,676,029</u>	<u>\$14,866,860</u>
Total liabilities and net assets	<u>\$17,677,773</u>	<u>\$14,867,913</u>

Community Foundation of Southeast Kansas Statement of Activities

Revenues, Gains and Other Support	2015	2014
Gifts and pledges	\$4,450,752	\$3,627,591
Income from services	145,144	120,641
Investment return (loss)	(88,923)	743,023
Other	<u>22,795</u>	<u>7,973</u>
Total revenues, gains and other support	<u>\$4,529,768</u>	<u>\$4,499,228</u>
Expenses		
Grants and other program services	\$1,294,770	\$1,237,529
Administrative expenses	425,627	357,853
Development expenses	<u>202</u>	<u>529</u>
Total expenses	<u>\$1,720,599</u>	<u>\$1,595,911</u>
Change in Net Assets	<u>\$2,809,169</u>	<u>\$2,903,317</u>
Net Assets, Beginning of Year	<u>14,866,860</u>	<u>11,963,543</u>
Net Assets, End of Year	<u>\$17,676,029</u>	<u>\$14,866,860</u>

Grants awarded since inception \$9.2 million

