

# 2018 Foundation Board of Trustees

Kevin Mitchelson – President  
Ron Rhodes – Vice-President  
Douglas Stuckey - Treasurer  
Chris Ward – Secretary

Marty Beezley  
Todd Coleman  
Dale Coomes  
Vicki Dennett  
Jeff Elliott  
Linda Grilz  
Paul Grimes  
Joe Hart  
Connie Kays  
Rob Lessen  
Crystal Marietta

Dave Martin  
Wilda Pentola  
Pam Phalen  
Diana Polston  
Mark Schifferdecker  
Betty Scripsick  
Becky Sloan  
Montie Taylor  
Wendell Wilkinson  
Talaat Yaghmour

## Community Foundation Affiliates Girard Area Community Foundation 2018 Board of Trustees

Zach Adams  
Blaise Bauer  
Dale Coomes  
Lori Johnson  
Jerod Norris  
Janet O'Brien  
Wilda Pentola  
Jeannie Peterson

Michelle Smith-Puckett  
Danielle Randall  
Nancy Schifferdecker  
Josh Smith  
Tony Stonerock  
Jim Vinze  
Vicki Vinze

## Fort Scott Area Community Foundation 2018 Board of Trustees

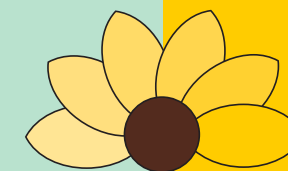
Barbara Albright  
Sheryl Bloomfield  
Janet Braun  
Steve Buerge  
Craig Campbell  
Mike Emerson  
Frank Halsey  
Dick Hedges  
Blake Hudson  
Patty LaRoche  
Lindsay Madison

Bob Marshall  
Dave Martin  
Gregg Motley  
Randy Nichols  
Beth Nuss  
Gary Palmer  
Larry Seals  
Travis Shelton  
Otie Thomas  
Melissa Wise  
Stephanie Witt

Kit Parks, Executive Director  
Sherri Stephens, Program Coordinator  
Kim Lynch, Office Administrator

[www.southeastkansas.org](http://www.southeastkansas.org)

# 2018 Annual Report



communityfoundation  
of SOUTHEAST KANSAS

Community Foundation  
of Southeast Kansas  
100 South Broadway, Suite 100  
P.O. Box 1448  
Pittsburg, Kansas 66762

620-231-8897 [www.southeastkansas.org](http://www.southeastkansas.org)

## **YOUR Community Foundation For Good ..... Forever**

*The Community Foundation of Southeast Kansas serves the region by encouraging charitable giving benefiting the common good and quality of life. We inspire leadership with programming that is responsive to the interests and needs of those we serve now and in the future.*

*Whether you are a potential donor, a professional advisor, a nonprofit director, or someone who is simply concerned about the future of Kansas, connecting with your community foundation is the first step toward a better tomorrow for your community.*



# The year in review.....

## Statement of Financial Position

## Statement of Activities

Dear Friends,

What a year! We were able to achieve so much good in 2018 thanks to our many generous donors, whose philanthropy has created positive impact in our Southeast Kansas communities!

The Community Foundation of Southeast Kansas and affiliates, the Girard Area Community Foundation and Fort Scott Area Community Foundation, work with donors to fulfill their charitable wishes, and award grants to non-profit organizations that provide opportunities and promote societal benefits.

Our Community Foundation has grown from \$35 million in assets in 2017 to over \$42 million in 2018! We were able to distribute over \$1.8 million in grants to local charities in 2018. These benefitted health and human services, children and youth activities, education, and art and cultural preservation. Since its inception in 2001, the Foundation has awarded over \$12.9 million in grants.

Our third annual Match Day, held on National Giving Tuesday in November, was successful beyond our expectations. Over \$175,000 was raised and CFSEK matched another \$30,000, helping twenty non-profit organizations and schools grow their endowed funds and build assets for their future. Thank you to all who made donations!

Thank you to our Fundholders! It is our honor and privilege to serve you. Without the generosity of those individuals and organizations that have opened funds and contributed, there would be no Community Foundation. Your good work allows us to enhance the quality of life all across Southeast Kansas. The Community Foundation does nothing on its own – we are your partner. Together, we make a difference that matters!

As we celebrate our 18th year, we look forward to working with you, our philanthropic partners, to continue to make effective and lasting improvements for Southeast Kansas communities.

If we work together there is so much good we can do!

With Gratitude,

Kevin Mitchelson  
President

Kit Parks  
Executive Director

<b>Assets</b>	Dec. 31, 2018	Dec. 31, 2017
Cash and cash equivalents	\$ 3,340,939	\$ 1,303,391
<b>Investments</b>		
Fixed income	11,228,167	7,891,127
Equity	13,054,869	12,067,413
Real Estate	9,508,830	9,508,830
Other brokers & investments	5,286,139	5,423,172
Pledges receivable, net	2,139	41,351
Prepaid expenses	4,388	3,221
Property & equipment, net	-	378
<b>Total Assets</b>	<b><u>\$42,425,471</u></b>	<b><u>\$36,238,883</u></b>
<b>Liabilities and Net Assets</b>		
<b>Liabilities</b>		
Accounts/Grants payable	\$ 65,970	\$ 37,156
Funds held for agencies	5,391,264	5,637,158
<b>Total Liabilities</b>	<b><u>\$ 5,457,234</u></b>	<b><u>\$ 5,674,314</u></b>
<b>Net Assets</b>	<b><u>\$36,968,237</u></b>	<b><u>\$30,564,569</u></b>
<b>Total Liabilities and Net Assets</b>	<b><u>\$42,425,471</u></b>	<b><u>\$36,238,883</u></b>

<b>Revenues, Gains and Support</b>	2018	2017
Gifts and pledges	\$ 9,065,926	\$ 14,911,266
Income from services	263,160	217,797
Rental income	94,370	84,933
Investment return	(866,955)	2,130,490
Other	141,620	28,133
<b>Total Revenues, Gains &amp; Support</b>	<b><u>\$ 8,698,121</u></b>	<b><u>\$17,372,619</u></b>
<b>Expenses</b>		
Grants and program services	\$ 1,618,621	\$ 1,162,841
Fees paid by agencies	212,425	171,024
Operating expenses	463,407	471,169
<b>Total Expenses</b>	<b><u>\$ 2,294,453</u></b>	<b><u>\$ 1,805,034</u></b>
<b>Change in Net Assets</b>	<b>\$ 6,403,668</b>	<b>\$15,567,585</b>
Net Assets, Beginning of Year	30,564,569	\$14,996,984
<b>Net Assets, End of Year</b>	<b><u>\$36,968,237</u></b>	<b><u>\$30,564,569</u></b>

### GRANTS AWARDED SINCE INCEPTION - \$12.9 MILLION

<b>Fund Category (\$000)</b>	<b>No. of Funds</b>	<b>Fund Bal 12/31/18</b>	<b>Granted in CY18</b>
Arts, Culture and Humanities	8	\$ 697	\$ 13
Education	25	13,899	281
Environment and Animals	4	1,717	73
Health	15	1,391	95
Public, Societal Benefit	70	12,991	870
Religion	3	377	16
Unrestricted	34	11,287	500
<b>Total Net Assets + Agency Funds</b>	<b>159</b>	<b>\$ 42,359</b>	<b>\$ 1,848</b>

<b>Fund Type (\$000)</b>	<b>No. of Funds</b>	<b>Fund Bal 12/31/18</b>	<b>Granted in CY18</b>
Administrative	2	\$ 1,097	\$ 48
Donor-Advised	29	6,093	584
Designated	31	11,879	404
Field of Interest	38	5,105	441
Organization	37	5,391	230
Scholarship	15	485	40
Unrestricted	6	2,515	101
Supporting Organization	1	9,794	0
<b>Total Net Assets + Agency Funds</b>	<b>159</b>	<b>\$ 42,359</b>	<b>\$ 1,848</b>

