

# 2021 Foundation Board of Trustees

Connie Kays - President  
Jeff Elliott- Vice President  
Douglas Stuckey - Treasurer  
Diane James - Secretary

Marty Beezley	Bill Morin
Susie Boldrini	Diana Polston
Susan Cook	Ron Rhodes
Ken Cunningham	Steve Robb
Linda Grilz	Mark Schifferdecker
Paul Grimes	David Shepherd
Rod Landrum	Becky Sloan
Rob Lessen	Steve Ward
Crystal Marietta	Ken Webb
Frances Mitchelson	Lynda Wilkinson

## Community Foundation Affiliates



### 2021 Board of Trustees

Zach Adams - <i>President</i>	Danielle Randall
Blaise Bauer	Jessica Ripper
Dan Duling	Nancy Schifferdecker
Lori Johnson	Josh Smith
Jerod Norris	Kim Viets
Mark Peak	Louie Weimer
Jeannie Peterson	Dave Wutke

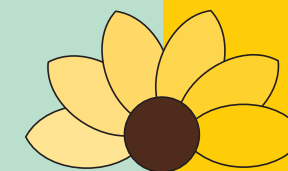


Fort Scott Area  
Community Foundation

### 2021 Board of Trustees

Connie Banwart	Charles Gentry
Sheryl Bloomfield	Bailey Lyons
Janet Braun	Lindsay Madison
Michelle Bruner	Gregg Motley
Steve Buerge	Gary Palmer
Craig Campbell	Kirk Sharp
Rhonda Dunn	Travis Shelton
Carla Farmer - <i>President</i>	David Shepherd

# 2021 Annual Report



communityfoundation  
of SOUTHEAST KANSAS

## YOUR Community Foundation For Good ..... Forever

*The Community Foundation of Southeast Kansas serves the region by encouraging charitable giving benefiting the common good and quality of life. We inspire leadership with programming that is responsive to the interests and needs of those we serve now and in the future.*

*Whether you are a potential donor, a professional advisor, a nonprofit director, or someone who is simply concerned about the future of Kansas, connecting with your community foundation is the first step toward a better tomorrow for your community.*

Community Foundation  
of Southeast Kansas  
100 South Broadway, Suite 100  
P.O. Box 1448  
Pittsburg, Kansas 66762  
620-231-8897 SoutheastKansas.org

Devin Gorman, Executive Director  
Kim Lynch, Office Administrator  
Sherri Stephens, Program Coordinator  
Joshua McCloud, Donor Services/Community  
Outreach Coordinator  
SoutheastKansas.org



# The year in review.....

## Statement of Financial Position

## Statement of Activities

Dear Friends,

Our world changed as we knew it in 2020! Although the year was full of challenges and struggles to maintain some normalcy in our lives, the pandemic did not alter the work of the Community Foundation, the dedication of our Board of Trustees, nor the generosity of donors who care deeply about our southeast Kansas region. We are fortunate and grateful.

Our 2020 Annual Report highlights our growth and accomplishments by partnering with many individuals and organizations whose common goal is to improve the quality of life in the place we call home.

The Community Foundation of Southeast Kansas and affiliates, the Girard Area Community Foundation and the Fort Scott Area Community Foundation, continue to build charitable resources and award grants which benefit the health and well-being of area citizens.

The following are some of our accomplishments in 2020:

- 91 community grants totaling \$229,538 were awarded during the annual granting cycles from the CFSEK general grant funds, the Rita J. Bicknell Women's Health Fund Giving Circles, the Future Fund Giving Circle, the Get Busy Livin' Foundation and the Elm Acres Foundation
- Our affiliate Foundations granted an additional \$74,073 to 30 organizations in the Fort Scott and Girard area during their general grant cycles
- 17 scholarship funds awarded over \$73,000 in scholarships to 62 students for the 2020 – 2021 school year
- CFSEK Match Day on Giving Tuesday, resulted in \$204,235 for the endowed funds of 25 local organizations
- Total assets of the Foundation increased from \$47.1 million in 2019 to \$50.9 million
- Grants distributed from all Funds with CFSEK in 2020 totaled \$1,910,900

We sincerely thank our Founders, Board of Trustees, Donors, Fund Holders and the many charitable organizations for the support to ensure the best future of our community. Our accomplishments are not possible without **YOU!**

Looking ahead... In 2021 CFSEK will celebrate 20 years! Our commitment and pledge is to partner, invest in our community and be a trusted resource for philanthropy.

**Together**, we can make it happen!

With Gratitude,  
Ron Rhodes  
President

Kit Parks  
Executive Director

<b>Assets</b>	<u>Dec. 31,2020</u>	<u>Dec. 31,2019</u>
Cash and cash equivalents	\$ 2,738,056	\$ 2,757,974
Fixed income investments	13,405,068	12,459,809
Equity investments	18,713,705	16,621,919
Real Estate	9,508,830	9,508,830
Closely Held Stock	291,081	-
Other brokers and investments	6,319,887	5,863,744
Pledges receivable, net	770	1,070
Prepaid expenses	5,452	4,105
Property and equipment, net	-	-
<b>Total Assets</b>	<u><u>\$50,982,849</u></u>	<u><u>\$47,217,451</u></u>
<b>Liabilities and Net Assets</b>		
<b>Liabilities</b>		
Accounts/Grants payable	\$ 39,447	\$ 35,353
Payroll Protection Liability	29,300	-
Funds held for agencies	6,929,445	6,163,871
<b>Total Liabilities</b>	<u>\$ 6,998,192</u>	<u>\$ 6,199,224</u>
<b>Net Assets</b>	<u>\$43,984,657</u>	<u>\$41,018,227</u>
<b>Total Liabilities and Net Assets</b>	<u><u>\$50,982,849</u></u>	<u><u>\$47,217,451</u></u>

<b>Revenues, Gains and Support</b>	<u>2020</u>	<u>2019</u>
Gifts and pledges	\$ 0	0
Income from services	355,158	310,922
Rental income	910	94,370
Investment return	4,719,556	3,686,801
Other	0	0
<b>Total Revenues, Gains &amp; Support</b>	<u>\$ 0</u>	<u>0</u>
<b>Expenses</b>		
Grants and program services	\$ 1,814,887	\$ 1,392,304
Fees paid by agencies	257,109	243,612
Operating expenses	552,502	499,650
<b>Total Expenses</b>	<u>\$ 2,624,498</u>	<u>\$ 2,135,566</u>
<b>Change in Net Assets</b>	<u>\$ 2,966,430</u>	<u>\$ 4,049,990</u>
Net Assets, Beginning of Year	<u>41,018,227</u>	<u>36,968,237</u>
<b>Net Assets, End of Year</b>	<u><u>\$43,984,657</u></u>	<u><u>\$41,018,227</u></u>

### GRANTS AWARDED SINCE 2001 - \$16.5 MILLION

<b>Fund Category (\$000)</b>	<b>No. of Funds</b>	<b>Fund Bal at 12/31/20</b>	<b>Granted in CY20</b>
Arts, Culture and Humanities	10	\$ 855	\$ 6
Education	31	14,847	305
Environment and Animals	4	1,928	80
Health & Wellness	16	2,190	111
Public, Societal Benefit	72	23,177	1,014
Religion	3	403	16
Unrestricted	33	7,514	379
<b>Total Net Assets + Agency Funds</b>	<b>169</b>	<b>\$ 50,914</b>	<b>\$ 1,911</b>
<b>Fund Type (\$000)</b>	<b>No. of Funds</b>	<b>Fund Bal at 12/31/20</b>	<b>Granted in CY20</b>
Administrative	2	\$ 1,477	\$ 35
Donor-Advised	34	8,028	486
Designated	28	13,516	537
Field of Interest	40	7,613	544
Organization	40	6,441	180
Scholarship	16	556	51
Unrestricted	8	3,504	78
Supporting Organization	1	9,779	-
<b>Total Net Assets + Agency Funds</b>	<b>169</b>	<b>\$ 50,914</b>	<b>\$ 1,911</b>

